

**ORACLE<sup>®</sup>**

---

**PRIMAVERA**

**What's New in P6 Professional  
Release 8.3**

March 2013

# Contents

---

<b>What's New in P6 Professional Release 8.3 .....</b>	<b>3</b>
Visualizer.....	3
Discussion Feature.....	7
XML Import/Export Enhancements.....	9
Granular Control Over Data During XML Import.....	10
Exporting Project Data to UN/CEFACT .....	11
Using Online HTML Help .....	12
Loading Resource Summary Data on Startup.....	13
Legal Notices .....	14

# What's New in P6 Professional Release 8.3

---

## Visualizer

Visualizer is a new feature that supports graphical reporting by enabling users to create customizable Gantt charts and timescaled logic diagrams (TSLDs).

In addition to the P6 Professional's standard graphical features, Visualizer enables a user to:

- Stack columns and use word wrapping in the Gantt chart.
- Use notebook topics or a list of steps as a bar label or as a field in the activity table.
- Apply various fonts to individual labels and fields.
- Color-code and apply different shapes for bars and endpoints.
- Draw bars on top of each other, for example, to show critical highlighting.

Visualizer is a desktop application that can be launched either from within P6 Professional or from the computer's start menu. It has a direct connection to the P6 database and provides live access to all P6 projects.

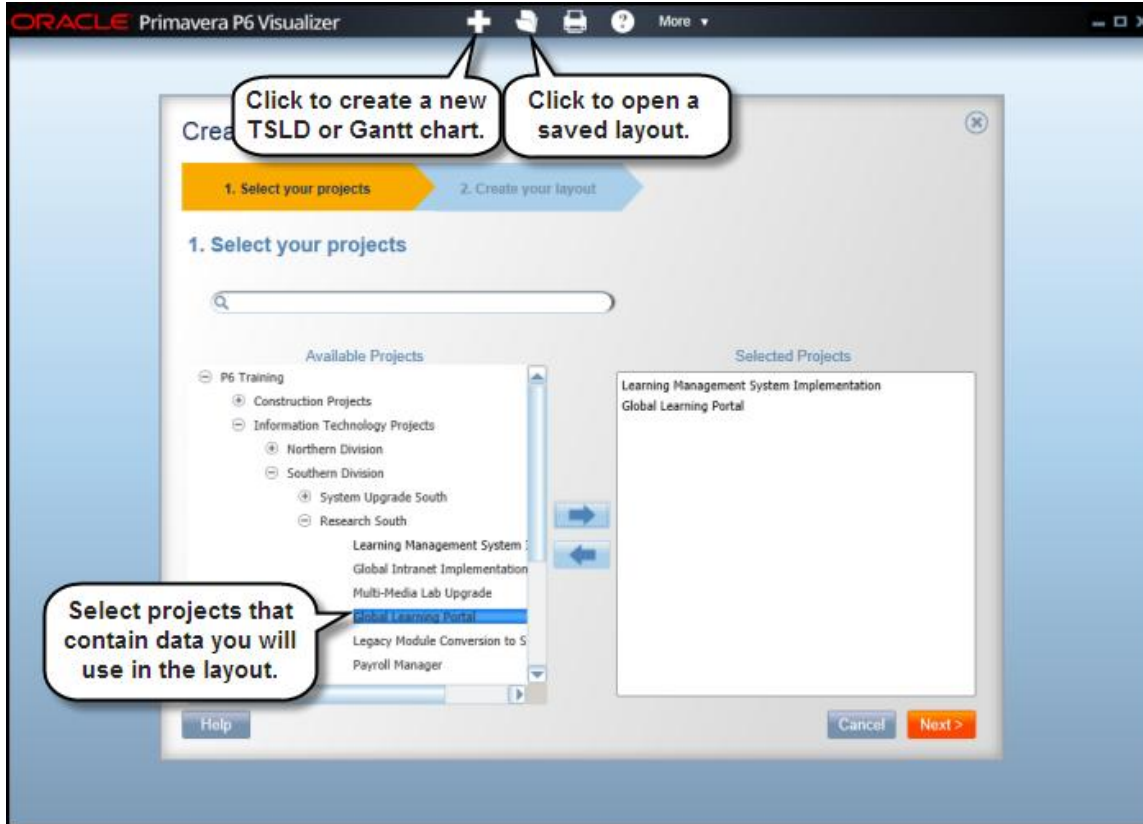
When Visualizer is launched, it displays a workspace where you can add, open, print and manage layouts. You also can import P6 Professional layouts or Visualizer layouts from other users.

Choose to create or open a TSLD or Gantt chart. The Gantt chart includes a grid and a bar chart. The grid displays activity information in a table format, similar to the Activity Table in P6 Professional. On the Chart & Grid tab in Layout Options, display the Gantt chart, the grid, or both. TSLDs enable you to display more than one activity per row, which condenses the project plan and the chains of activities that drive the project schedule.

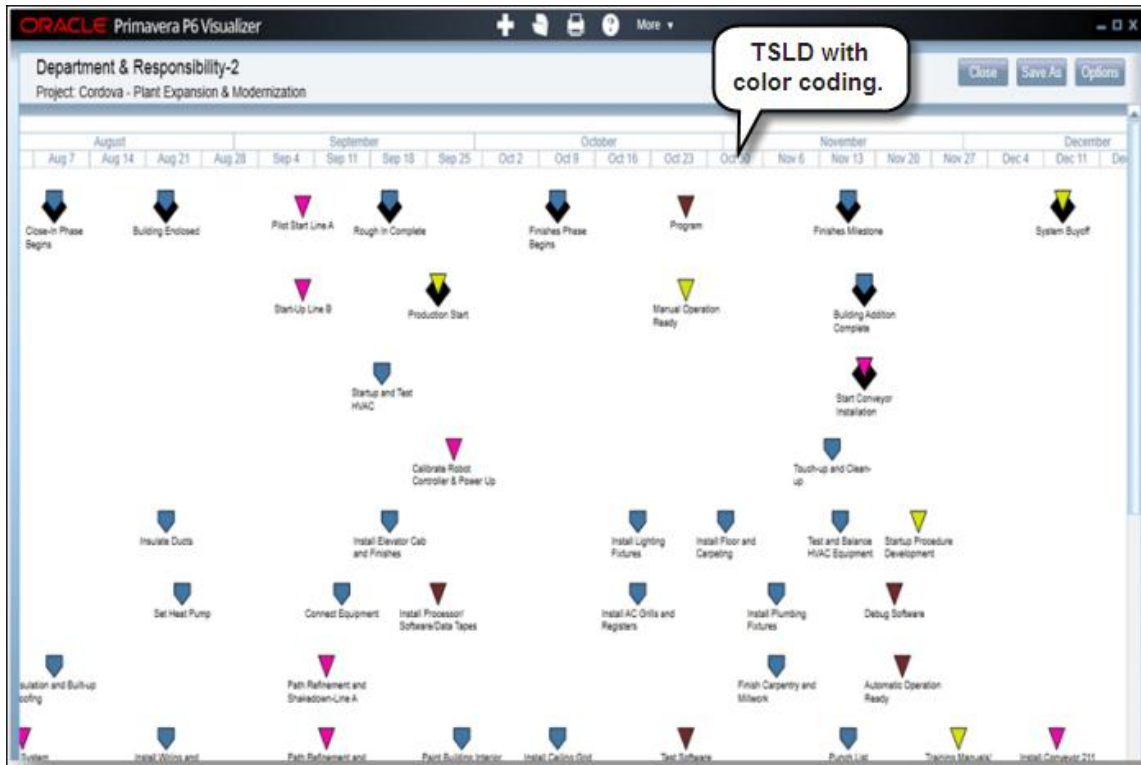
You can run Visualizer layouts in batches for faster periodic reporting. Using a tool like Windows Scheduler, schedule the batch runs of reports in advance.

When creating layouts, Visualizer obeys settings specified in Admin Preferences in P6 Professional. If P6 Professional is connected to a P6 EPPM database, it obeys Application Settings in P6:

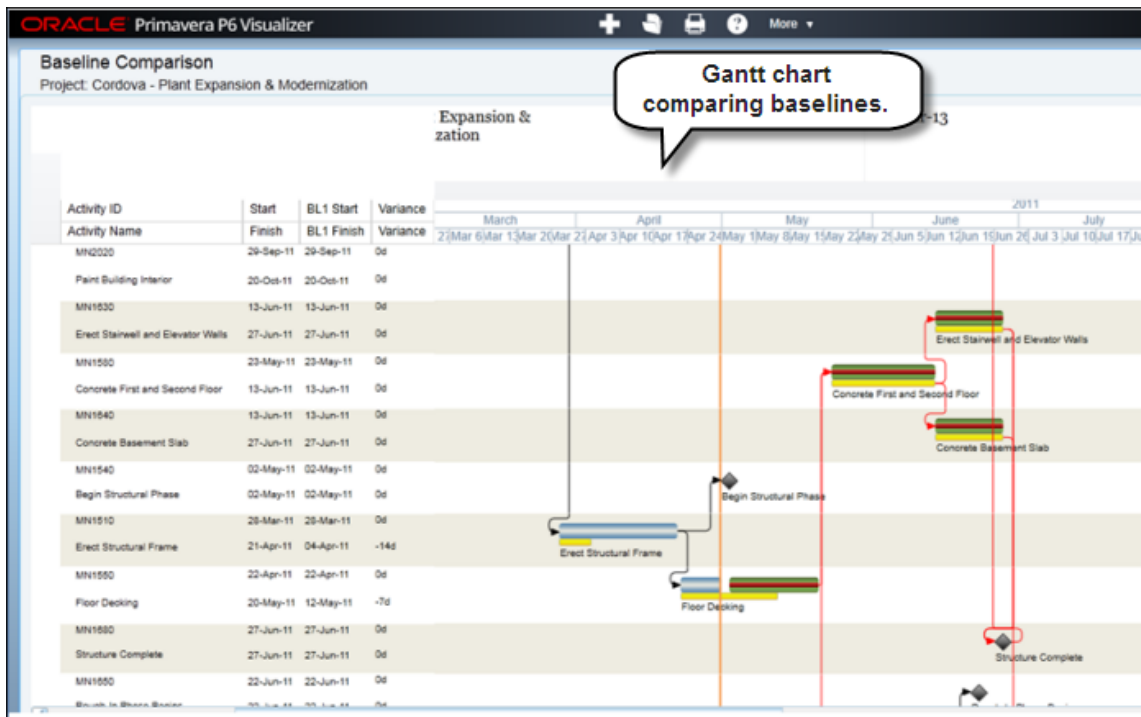
- Weekday on which the calendar week begins
- Number of work hours for time periods and time abbreviations
- Online Help settings



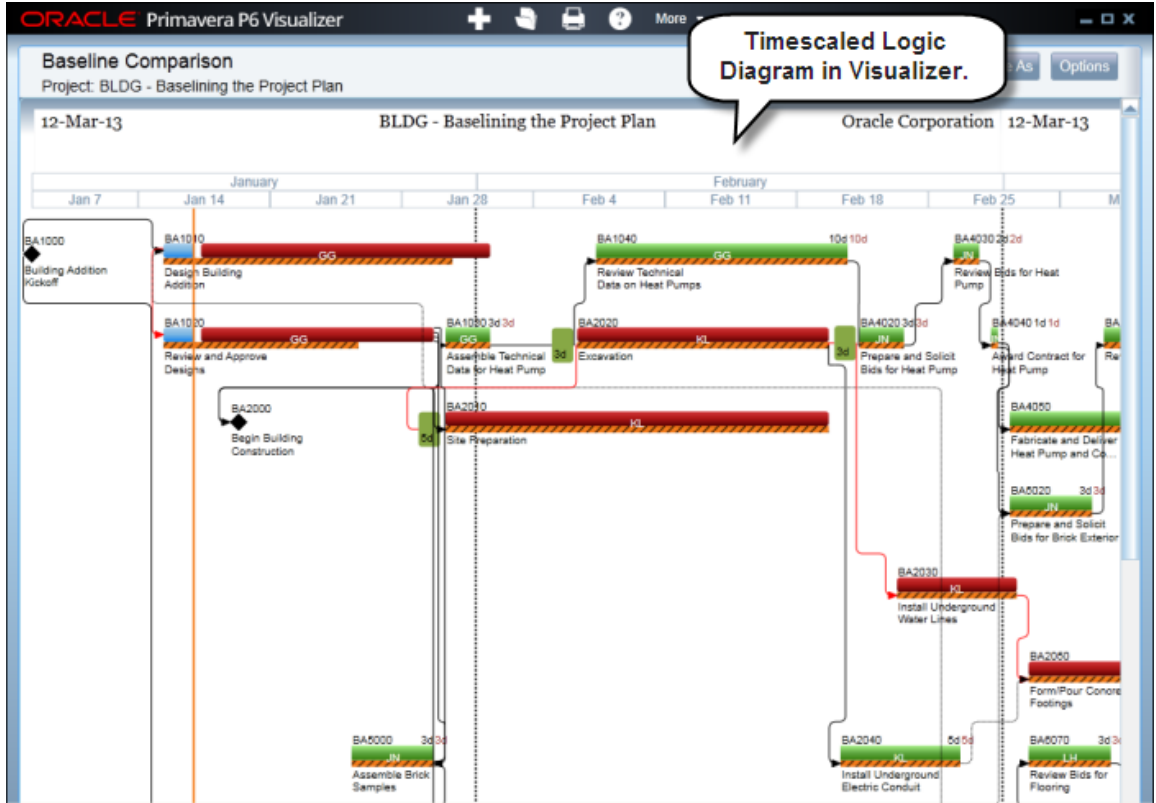
When creating a layout in Visualizer you can define options, such as filter, group, and sort criteria, to customize the Gantt chart or TSLD. The layout below shows activities color-coded by activity code values with various shapes for endpoints.



Display baseline bars to compare schedules and stack fields in the activity table to save horizontal space.



The screen below shows an example of a TSLD with multiple bars per activity and critical activities coded in red.



**To access this feature:**

In P6 Professional, click *Visualizer* on the Tools menu or open it directly from the Start menu.

## Discussion Feature

P6 Professional provides a new Discussion feature that enables team members and project managers to communicate about specific activities. All comments are dated and labeled with the contributor's name. They are saved with the activity for future reference, allowing contributors to view the entire discussion thread before posting a new comment. Read or add comments in the Discussion tab in the Activities window.

The screenshot displays the Primavera P6 Professional interface for project IT00351 (Project Swordfish). The main window shows a Gantt chart with various project activities and milestones. Below the Gantt chart, the 'Discussion' tab is active for activity IT1010. The discussion window shows two comments: one from Ian Vincent and one from admin. A 'Post' button is visible at the bottom right of the discussion window. Two callout boxes provide instructions: 'Posted comments are saved with the task.' and 'Type a comment and then click Post.'

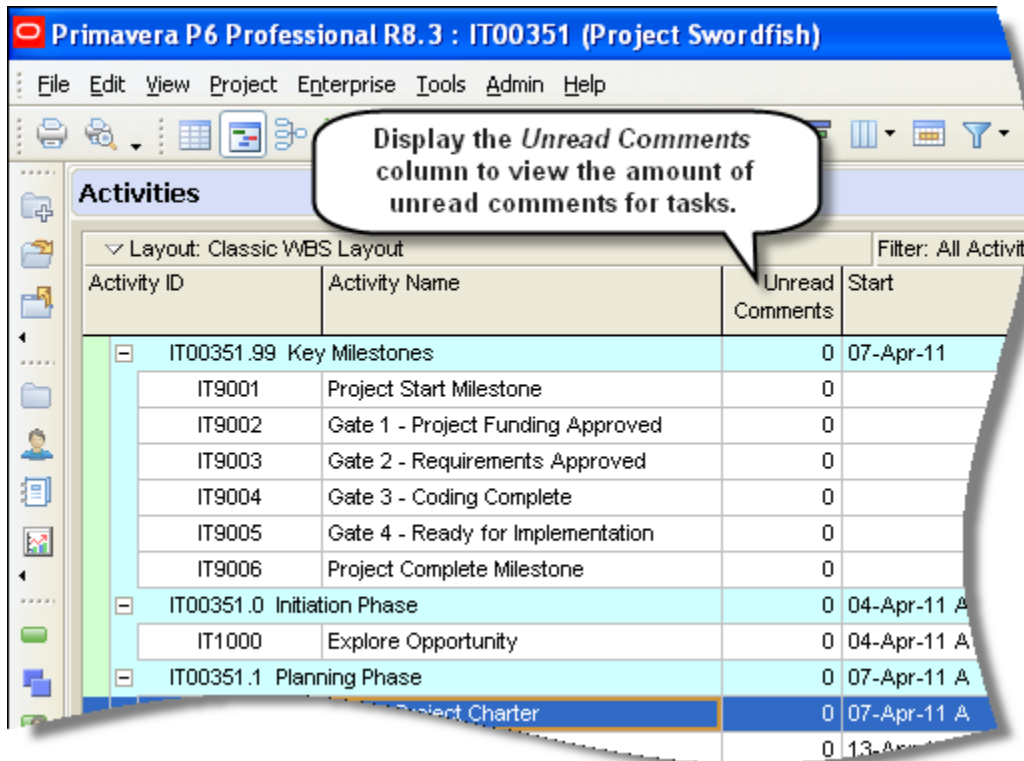
Activity ID	Activity Name	Start Date	End Date
IT00351.99	Key Milestones		
IT9001	Project Start Milestone		17-Aug-11
IT9002	Gate 1 - Project Funding Approve		
IT9003	Gate 2 - Requirements Approved		
IT9004	Gate 3 - Coding Complete		
IT9005	Gate 4 - Ready for Implementation		
IT9006	Project Complete Milestone		
IT00351.0	Initiation Phase	06-Apr-11	
IT1000	Explore Opportunity	06-Apr-11	
IT00351.1	Planning Phase	26-Apr-11	
IT1010	Define Project Charter	13-Apr-11	
IT1020	Create Plans	11-Apr-11	
IT00351.2	Requirements Phase	17-May-11	

Discussion for Activity IT1010:

- Ian Vincent**  
I'll work with Jo in the PM office to ensure that everyone is included.  
Less than 1 minute ago
- admin**  
Please be sure to include all stakeholder groups and provide a reliable contact for each group.  
2 hours ago

Post

A new column, *Unread Comments*, is available in the Activities window to alert project managers to comments awaiting review. The feature can also be accessed through Team Member Web, the Team Member for iPhone app, and P6.



**To access this feature:**

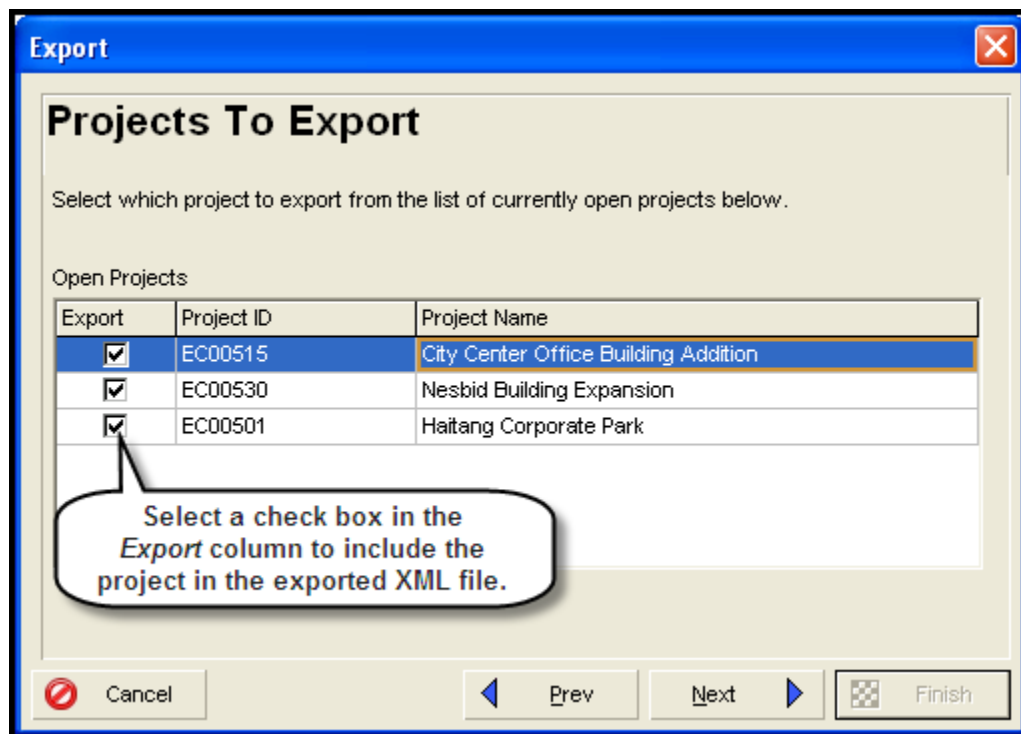
In the Activities window, select a task and then click the Discussion tab.



## XML Import/Export Enhancements

P6 Professional R8.3 provides a number of enhancements to its XML import/export functionality. A user can now exchange XML project files with previous version of P6 Professional from R6.2 SP4 onward. Also, all features supported by the P6 Professional XER format -- constraining of external relationships during import, inclusion of Price/Unit in resource assignments, import of Past Period Actuals -- are supported in XML format as well.

P6 Professional R8.3 also enables a user to import or export multiple projects simultaneously. When exporting multiple projects, the projects are combined into a single XML file. Importing multiple projects requires the projects to be contained in a single XML file.



### To access this feature:

On the File menu, click *Import*, or click *Export*, and then select *Primavera P6 - (XML)*. Click *Next* to select the projects to import or export.

## Granular Control Over Data During XML Import

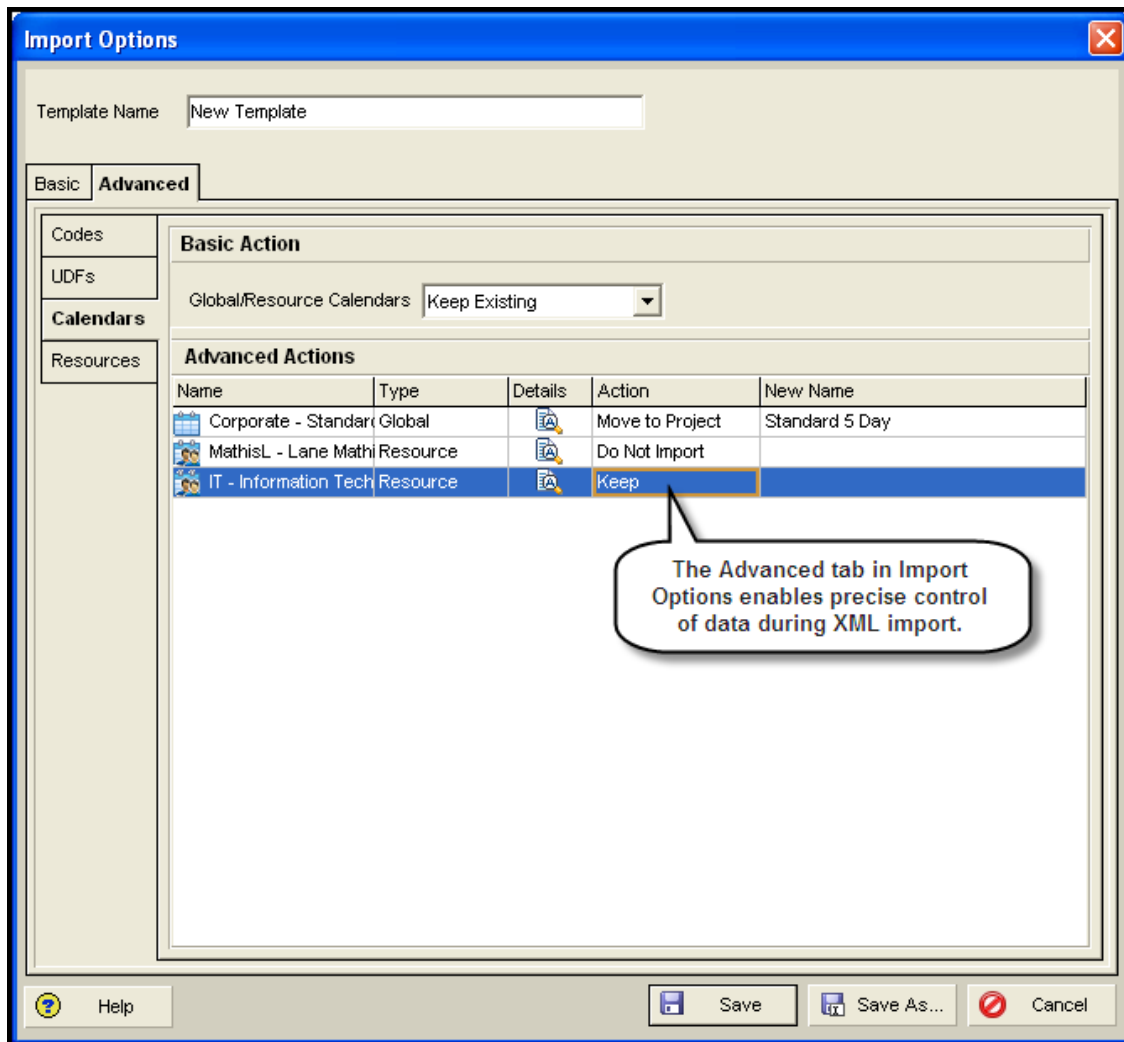
A new screen in P6 Professional R8.3's XML project import process enables a user to view data in the incoming file and adjust it as necessary before importing it into the database.

This feature is especially useful to project managers who import third-party schedules that contain data such as resources, calendars, codes, and UDFs. They may want to modify that data to match their own data structures. In previous versions of P6, they manually scanned and then modified the data before importing .

New import options include the ability to:

- Move global codes and calendars to project-level data or remove them from the import.
- Map codes, UDFs, resources and calendars to existing values in the database or rename them.
- Specify resource locations for importing resources into a selected hierarchy.

Import options can be saved as a template for use in subsequent imports.

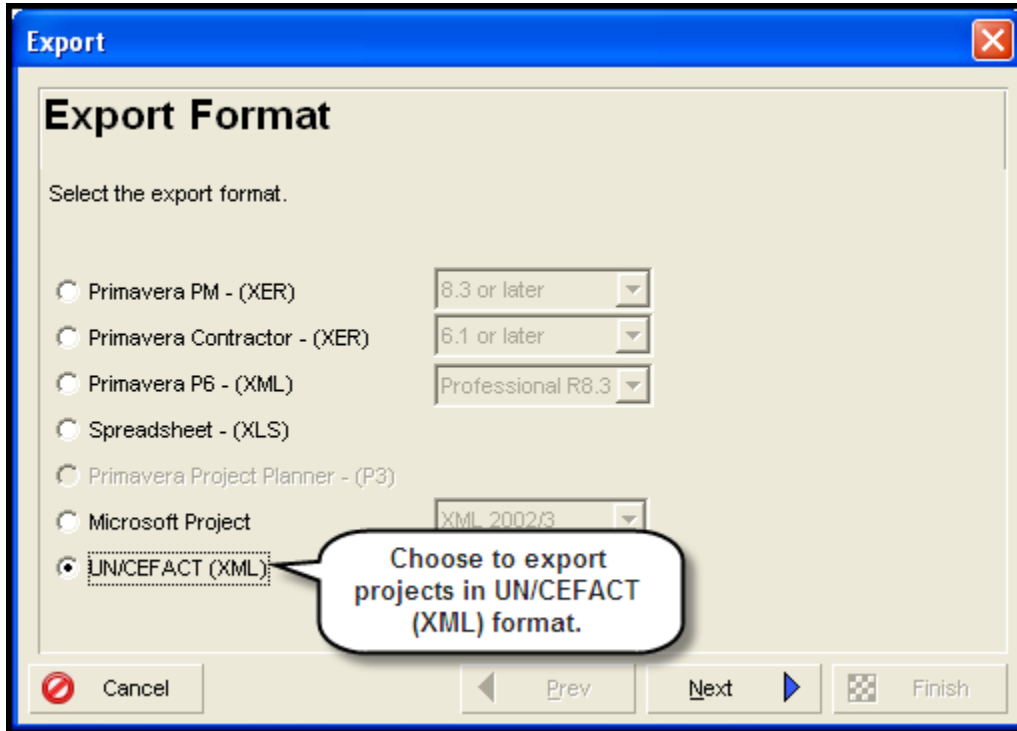


### To access this feature:

Click the Advanced tab on an XML import template.

## Exporting Project Data to UN/CEFACT

P6 8.3 includes support for the UNCEFACT XML schema schedule format. This XML schema is designed to exchange schedule and cost data in a software-neutral format. This is an important feature for customers who work with U.S. Department of Defense and other U.S. government agencies because as of June 2012 they are required to submit their schedules in the UN/CEFACT XML schema format.

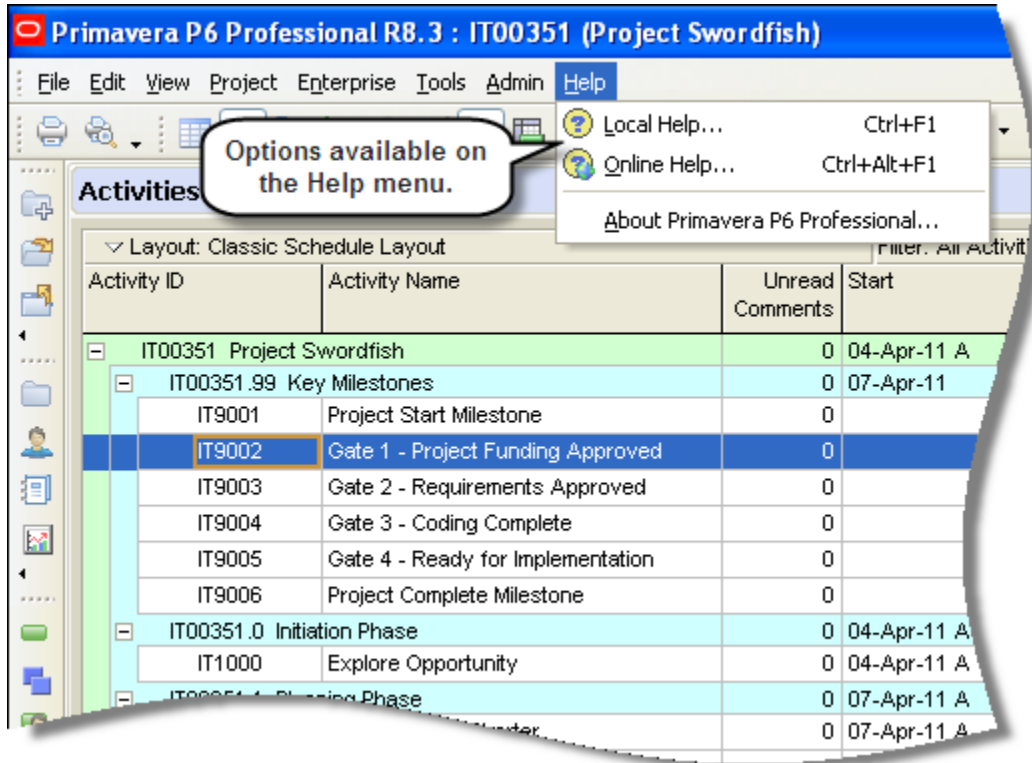


### To access this feature:

On the File menu, select Export.

## Using Online HTML Help

The Help menu in P6 Professional 8.3 contains two options: *Local Help* and *Online Help*. The Online Help feature displays P6 Professional help content in basic HTML format, enabling people with disabilities to use the adaptive features of their browsers.



Choose *Online Help* from the Help menu to launch an URL you specify on the Options tab in the new P6 Professional Online Help section in Admin Preferences. The URL defaults to the location of the R8.3 files on Oracle Technology Network (OTN). If this field is blank, online help is no longer available and local help launches.

Choose *Local Help* to have the Help menu behave the same as *Contents* does in P6 Professional R8.2 and earlier. The HTML Help files are installed locally when P6 Professional is installed. Click *Local Help* to launch the local file. By default, the installation location is \\Oracle\Primavera P6\P6 Professional\Help.

The *Always launch Online Help for the F1 shortcut key and context-sensitive help* check box in Admin Preferences determines which Help system loads when using the F1 key and launching context-sensitive pages. Select the check box to launch online help from the specified URL location. By default, the check box is not selected, meaning local help is launched when a user uses the F1 key.

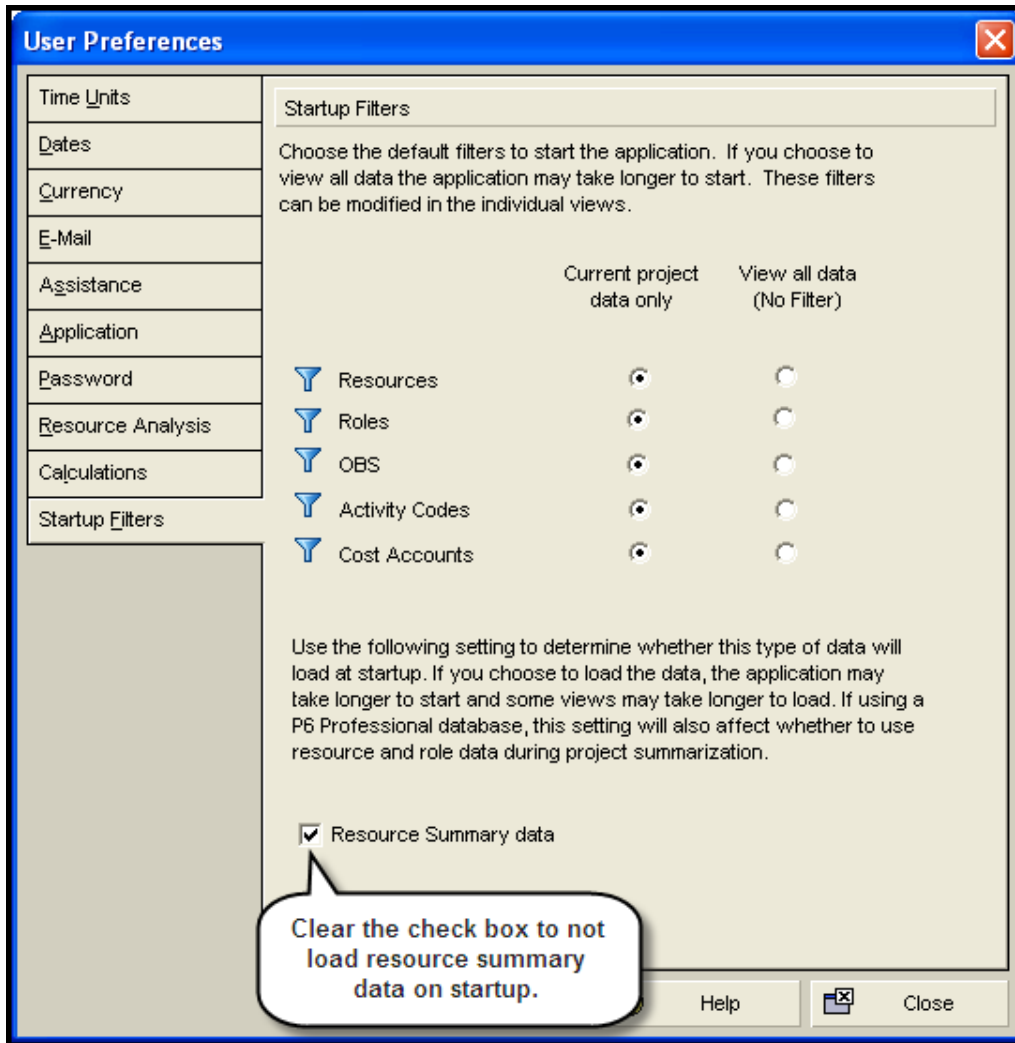
### To access this feature:

Click the Options tab in Admin Preferences.

## Loading Resource Summary Data on Startup

The new Resource Summary data setting in the Startup Filters tab of User Preferences enables a user to choose whether this type of data will load at startup. If the Resource Summary data check box is selected, P6 Professional may take longer to start and some views may take longer to load. Prior to R8.3, this setting was stored in the registry. It was moved to startup filters to enable easier access by users. The setting also affects whether to use resource and role data during project summarization.

A user also can choose the data filters to run when starting P6 Professional. Startup filters are available for Oracle and SQL Server installations.



### To access this feature:

On the Edit Menu, click *User Preferences*. Click the Startup Filters tab.

## Legal Notices

Oracle Primavera What's New in P6 Professional

Copyright © 1999, 2013, Oracle and/or its affiliates. All rights reserved.

Oracle and Java are registered trademarks of Oracle and/or its affiliates. Other names may be trademarks of their respective owners.

This software and related documentation are provided under a license agreement containing restrictions on use and disclosure and are protected by intellectual property laws. Except as expressly permitted in your license agreement or allowed by law, you may not use, copy, reproduce, translate, broadcast, modify, license, transmit, distribute, exhibit, perform, publish or display any part, in any form, or by any means. Reverse engineering, disassembly, or decompilation of this software, unless required by law for interoperability, is prohibited.

The information contained herein is subject to change without notice and is not warranted to be error-free. If you find any errors, please report them to us in writing.

If this is software or related documentation that is delivered to the U.S. Government or anyone licensing it on behalf of the U.S. Government, the following notice is applicable:

U.S. GOVERNMENT END USERS: Oracle programs, including any operating system, integrated software, any programs installed on the hardware, and/or documentation, delivered to U.S. Government end users are "commercial computer software" pursuant to the applicable Federal Acquisition Regulation and agency-specific supplemental regulations. As such, use, duplication, disclosure, modification, and adaptation of the programs, including any operating system, integrated software, any programs installed on the hardware, and/or documentation, shall be subject to license terms and license restrictions applicable to the programs. No other rights are granted to the U.S. Government.

This software or hardware is developed for general use in a variety of information management applications. It is not developed or intended for use in any inherently dangerous applications, including applications that may create a risk of personal injury. If you use this software or hardware in dangerous applications, then you shall be responsible to take all appropriate failsafe, backup, redundancy, and other measures to ensure its safe use. Oracle Corporation and its affiliates disclaim any liability for any damages caused by use of this software or hardware in dangerous applications.

This software or hardware and documentation may provide access to or information on content, products and services from third parties. Oracle Corporation and its affiliates are not responsible for and expressly disclaim all warranties of any kind with respect to third-party content, products, and services. Oracle Corporation and its affiliates will not be responsible for any loss, costs, or damages incurred due to your access to or use of third-party content, products, or services.